



## Installation Guide - Firmware Update Utility for Corona<sup>®</sup>CAD<sup>™</sup> and Coulochem<sup>®</sup>III Detectors

---

### 1.0 OVERVIEW

- 1.1 The Corona-Coulochem<sup>®</sup> Firmware Update Utility programs the flash memory of either ESA's Corona CAD (or Coulochem III). The utility updates executable firmware exclusively; it does *not* update system variables such as the serial number, baud rate, stored methods, etc.

### 2.0 EQUIPMENT REQUIRED

- 2.1 A Personal Computer (PC) Running Windows<sup>®</sup> 2000 or XP
- 2.2 USB Cable, A to B Style which is the Standard  
ESA P/N 70-5713 is a 3 Meter Cable of this Type
- 2.3 Installation CD or via internet access – [www.esainc.com](http://www.esainc.com)

### 3.0 INSTALLATION USING THE CD

- 3.1 Close *all* software applications and dialog boxes and then insert the Installation CD-ROM.
- 3.2 The PC should be on and the Corona CAD (or Coulochem III) should be off.
- 3.3 Insert the “**Corona-Coulochem Firmware Update Utility**” CD into the PC.
- 3.4 The installation CD should automatically run. If it does not: navigate to the root directory of the CD drive and double click on SETUP.EXE.
- 3.5 Click <Install> and then Click <Finish>. If this is *not* the 1<sup>st</sup> time the update utility has been run, select “REMOVE” to ensure the update utility is properly replaced.

### 4.0 DOWNLOADING AND INSTALLING USING THE INTERNET

- 4.1 Open the website (<http://www.esainc.com>) and select the [SOFTWARE] button. Click on the picture of the product you wish to check for updates and follow the instructions on the page presented. Click on the appropriate firmware version to begin the download.
  - 4.1.1 File download will begin after selecting RUN when the pop up window appears.
  - 4.1.2 Click RUN on the security warning.

## Installation Guide - Firmware Update Utility for Corona®CAD™ and Coulochem®III

- 4.1.3 If this is *not* the 1<sup>st</sup> time the update utility has been run, select “REMOVE” to ensure the update utility is properly replaced.

### 5.0 CONNECTING THE PC TO THE CORONA CAD (OR COULOCEM III) INSTRUMENT

- 5.1 Connect the Corona CAD (or Coulochem III) to the PC using the USB cable.
- 5.2 Turn the Corona CAD (or Coulochem III) instrument on.
- 5.3 If your PC is running Windows 2000 no user interaction is needed.
- 5.4 If your PC is running Windows XP you see the following:
- 5.4.1 Welcome to the Found New Hardware Wizard.
- 5.4.2 Found new hardware: “ESA Corona (or Coulochem)”.
- 5.4.3 Select “Install the software automatically” and Click <Next> and you may see the following dialog.



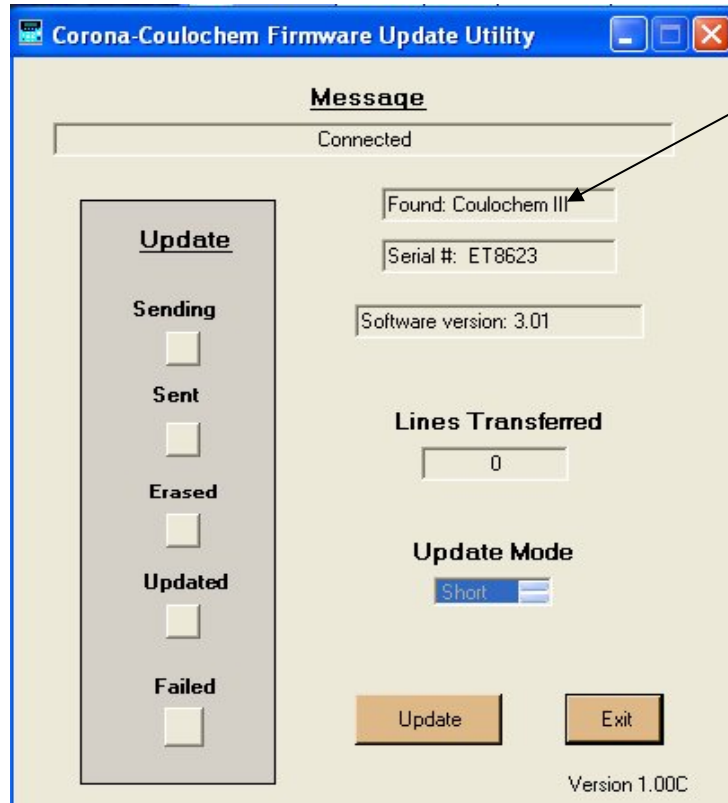
- 5.4.4 Select “No, not this time” and click <Next>.
- 5.4.5 Completing the Found New Hardware Wizard. Click <Finish>.
- 5.5 You should briefly see “Found New Hardware” and the message “Connected”.

### 6.0 RUNNING THE UPDATE UTILITY

- 6.1 Ensure that the USB cable is properly connected, as described in the previous section. Turn on the instrument and allow it to complete its power-up tests. Make sure the instrument is in the Main menu. This is slightly different for the Corona CAD and Coulochem III.

## Installation Guide - Firmware Update Utility for Corona<sup>®</sup>CAD<sup>™</sup> and Coulochem<sup>®</sup>III

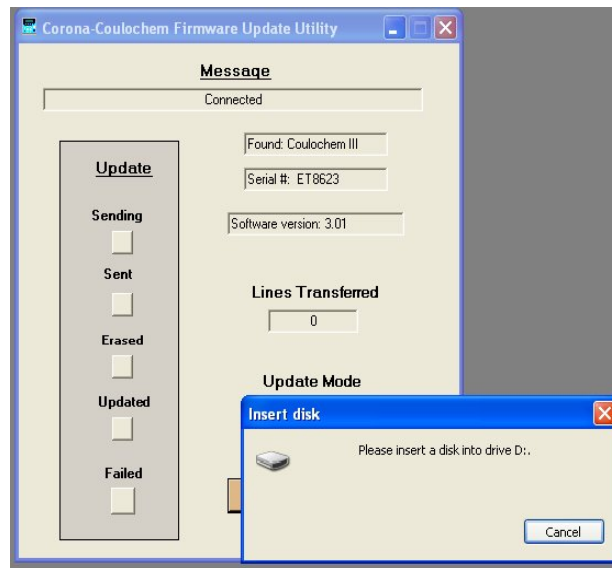
- 6.1.1 For Corona: wait for Main Corona Menu to appear.
- 6.1.2 For Coulochem III: wait for the warm-up countdown to end, you will see the Copyright screen and be prompted to press NEXT, and after pressing NEXT you will see the Main Menu.
- 6.2 From the Windows Start Menu select “Program > Corona-Coulochem Firmware Update Utility” and then click on “Corona-Coulochem Firmware Update Utility”.
- 6.3 The program starts and indicates that it found the instrument.
  - 6.3.1 If not click <exit> and try reconnecting your instrument.



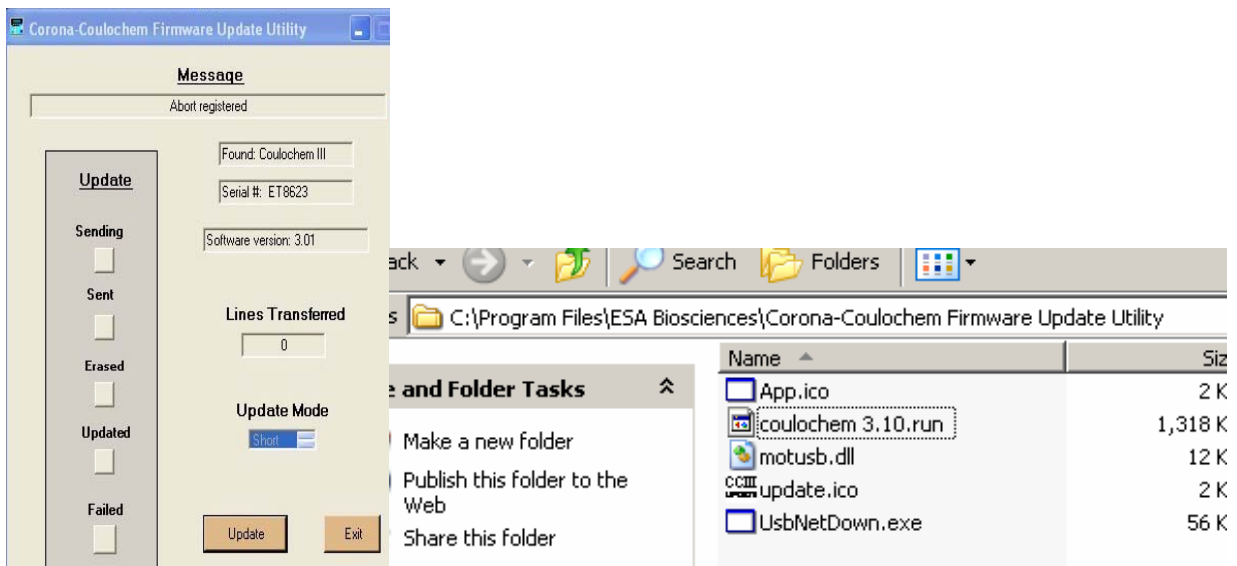
or Found: Corona  
(same is true of  
other screen)

- 6.4 If the update is performed via USB, click “Update” and skip to section 6.5.1. If the update is being performed with the CD you will be asked to insert a disk in Drive D.
  - 6.4.1 If the D: Drive is not your CD’s location, click “Cancel” and you will see the Open file screen where you can select the correct drive.

# Installation Guide - Firmware Update Utility for Corona®CAD™ and Coulochem®III

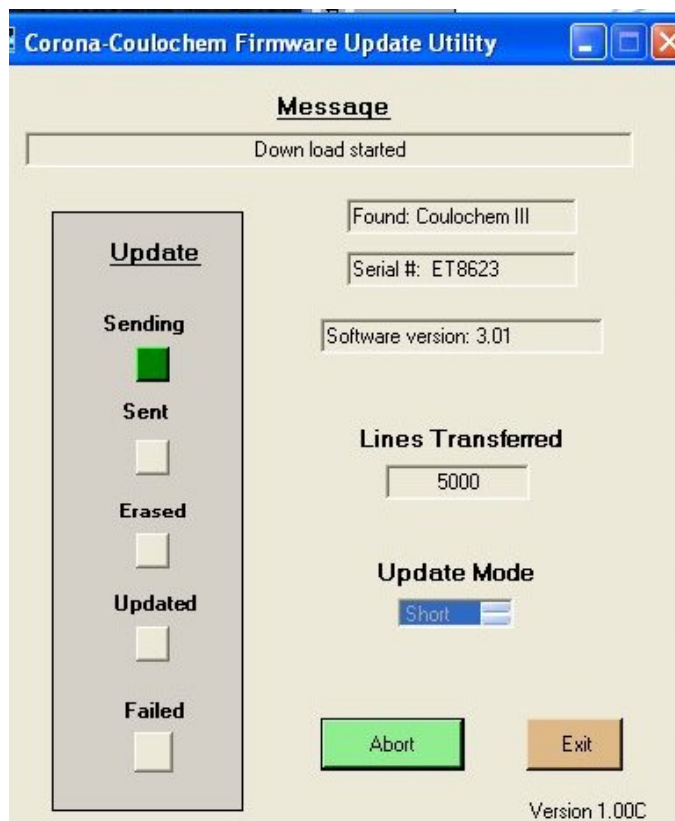


- 6.5 Select the .run file and click “OPEN”. The .run file is located in the directory C:\Program Files\ESA Biosciences\Corona-Coulochem Firmware Update Utility



- 6.5.1 The “Sending” block turns green during transmission.

## Installation Guide - Firmware Update Utility for Corona®CAD™ and Coulochem®III



- 6.6 Once the update is complete the “Updated” block on the PC screen will turn green.
- 6.7 Select “Exit”.
- 6.8 Turn the instrument off for 10 seconds and then turn it back on.
- 6.9 Confirm the correct version of firmware has been successfully downloaded. Go to the Windows Start Menu select “Program > Corona-Coulochem Firmware Update Utility” and then click on “Corona-Coulochem Firmware Update Utility”. Click exit when finished.

If you need technical assistance, please contact ESA's Technical Service Department or your ESA representative for assistance.

**ESA Biosciences, Inc.**  
22 Alpha Road • Chelmsford, MA 01824-4171  
Tel: (800) 275-0102 • Fax: (978) 250-7092  
E-mail: techsupport@esainc.com